



FOR A UNIQUE &  
SPECTACULAR  
≡ DREAM HOME





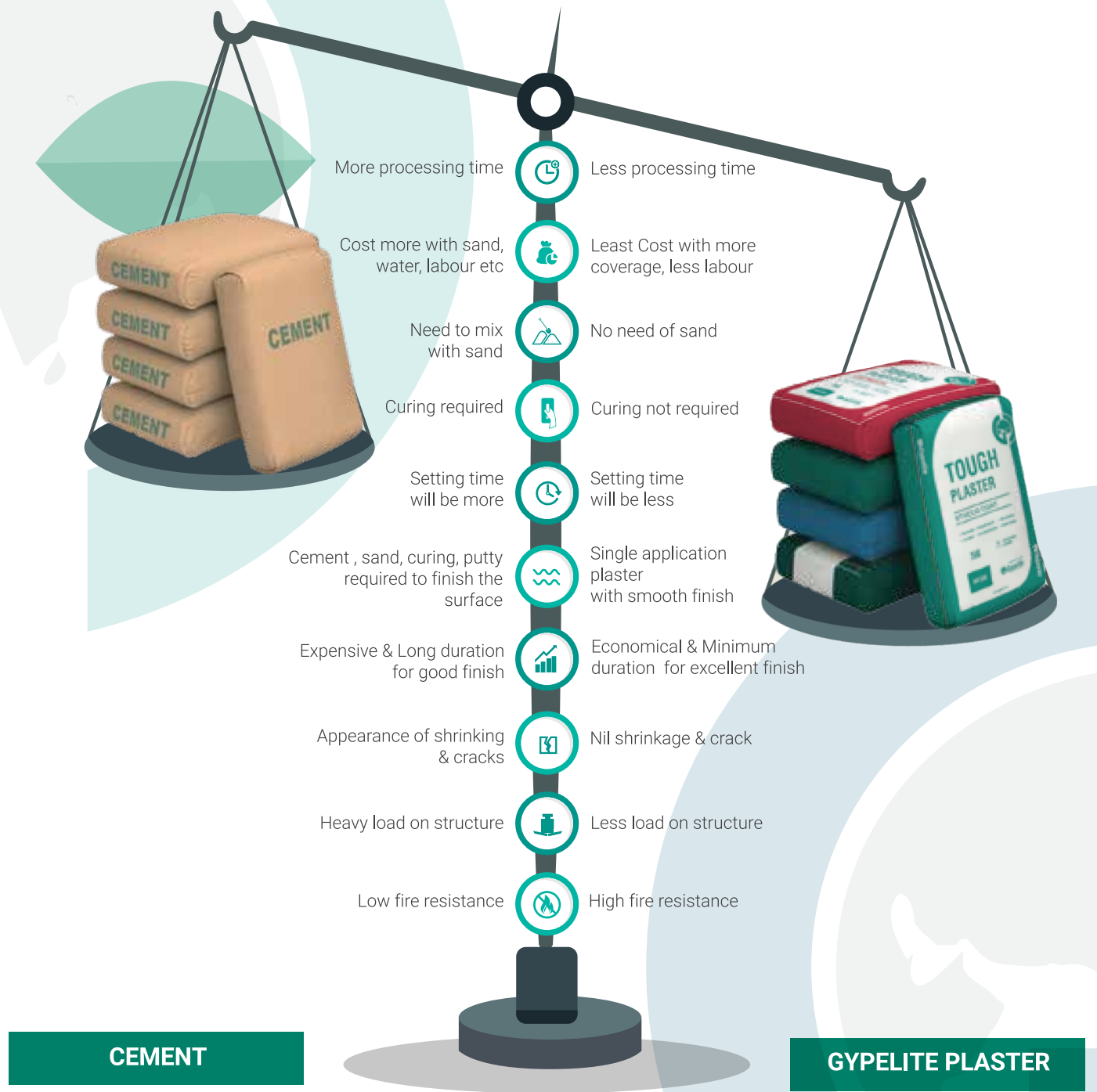
# THE GYPELITE - *lite* STORY

Gypelite India Pvt Ltd is a trusted name in the gypsum market. The company has been led by highly experienced professionals in the industry who have redefined the modern building standards. Under their guidance and supervision the company has set high standards on its manufacturing process, product quality and customer satisfaction. At Gypelite we make plaster boards, plaster compounds and ceiling tiles from pure natural gypsum keeping in mind that houses built today are an asset for the future. For us each house we built is the beginning of a new relation; a relation for generations. That's why at Gypelite we say "use our products and see, they will live to tell a tale and the legacy will travel through lives".

Gypelite products meet the IS 2095, ASTM C473, ASTM 1396 and EN specifications. We have confidence in our products and now you are our inspector.







**CEMENT**

**GYPELITE PLASTER**



## SPECIALITY OF OUR PRODUCTS



Supports dry construction



Light weight



Faster construction



Wide range of architectural applications



Unmatched to any other alternate surfacing product



Made of 100% natural gypsum



Highly durable, easy to install & resist fire



Low thermal conductivity



### STUCCO COAT

ALL PURPOSE

- High purity
- Consistent performance
- Easy to apply
- Extremely smooth
- High quality finishing that is ready for painting
- Curing NOT required



### CONTINENTAL

FIRE RESISTANT

- Economic and energy saving
- Easy to apply
- Extremely smooth
- High quality finishing that is ready for painting
- Curing NOT required



### ELEGANT

ZERO WASTAGE

- Easy to mix
- Provides smooth dense surface
- High density
- Fire resistant
- Specially designed for machine application
- Advanced coverage







### MACHINE PLASTER

ADVANCE & WIDE COVERAGE

- Easy to apply
- Energy saving
- Thermal insulating
- Fire resistant
- Curing NOT required
- Superb white finishing



Products				
WATER / PLASTER RATIO	70-75%	65-70 %	65-70%	65%
INITIAL SET TIME	10-15 min	15 min	15-20 min	50-60 min
COMPRESSIVE STRENGTH	>1 N/mm <sup>2</sup>	>1 N/mm <sup>2</sup>	>1 N/mm <sup>2</sup>	>1 N/mm <sup>2</sup>
DENSITY	700-800 kg/m <sup>3</sup>	700-750 kg/m <sup>3</sup>	650-700 kg/m <sup>3</sup>	700 kg/m <sup>3</sup>
COVERAGE FOR 10mm THICKNESS	9.5-10.5kg/m <sup>2</sup>	9-10kg/m <sup>2</sup>	8-9kg/m <sup>2</sup>	7-8kg/m <sup>2</sup>

# TOUGH WALL PUTTY

Tough wall putty is a best class product to give smooth finish to the interior and exterior rough plasters. It can be applied to exterior and interior cement walls, concretes etc. In many ways our product is superior to the competitors, including:

- ✔ Smooth finish
- ✔ Good workability
- ✔ Water resistant
- ✔ Excellent strength
- ✔ Abrasion resistance
- ✔ Good adhesion to emulsion parts
- ✔ Drying time to recoat 6-8 hours

Tough wall putty is available in 1kg, 5kg, 20kg, 40kg and comes with a shelf life of 1 year from the date of manufacture if left unopened and away from the direct sunlight.



# DYNAMIC BOND

Dynamic Bond is a high strength gypsum plaster bonding agent for concrete walls. It's water proofing property prevents leakages from cracks. Dynamic bond is very economical and comes with coverage of 140 sft/kg.

# DYNAMIC BOND PLUS

Dynamic Bond Plus is specifically used for bonding gypsum/plaster with concrete in a single coat, creating a very strong mechanical and chemical bonding. It is green colour elastomeric granular water proof paint with water proofing properties and impact resistance.



# BONDIT

BONDIT is a bonding substance used for surface preparation especially RCC surfaces for ceiling and walls. It bonds within a short time and prevents intensive labour hacking process wherein the possibility of plaster de-bonding is imminent.

# TOUGH RENDERS

Renders are combination of gypsum powder (stucco) with specific additives and are used on cement walls to make them ready for painting. They are good for repair works as well.

# ULTRA

Ultra from Gypelite are special purpose single layer renders which can be hand applied to get a thickness of 3 to 6mm. They have the following advantages over traditional cement renders

Available in



# ULTRA PLUS

If you require a flexible thickness of render within a small surface area of your wall, our hand applied renders will be the perfect choice. Ultra plus renders are

Available in



# MACHINE RENDERS

Machine renders are for large area applications using plastering machines. Our product is designed to handle more weight and are suitable for creating layers from 6mm thickness over a large area.

Available in



- ✔ Cost efficient
- ✔ Easy to use
- ✔ Less time consumption
- ✔ High adhesion

- ✔ Cost efficient
- ✔ Easy to use
- ✔ Less time consumption
- ✔ High adhesion
- ✔ Improved workability
- ✔ Thickness range starts from 5mm to 30mm.

- ✔ Cost efficient
- ✔ Easy to use
- ✔ High adhesion
- ✔ Large coverage
- ✔ Thickness range starts from 6mm

## PROPERTIES

	TEST METHODS	SPECIFICATION
Setting time (min)	EN 196	≥ 100 initial 500- final
Water absorption @28 days for 24 hours	Karsten Tube	≤ 0.8
Tensile strength N/mm2	En 1348	≥ 1.0
Compressive strength N/mm2	En 1015-11	3.5- 7.5
Water retentivity %	DIIN 18555-7	≥ 98





## PERFECT JO-I-NT

All purpose

Readymix

Available in



Available in



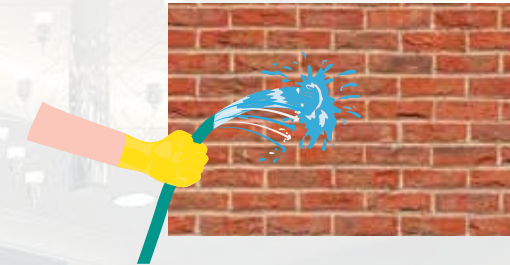
Perfect joints are mixture of gypsum with water and various additives to seal the joints between wallboards to create a perfect levelled marvelous base for painting the walls. Jointing compounds can easily patch up holes, bumbs, tears and also fix other minor damage on the walls. They are free flowing, minimal wastage, premixed for easy usage and less sanding



## APPLICATION METHOD

### CLEAN THE WALL

The wall surface shall be clean and free of dust, dirt, oil or other foreign particles



### PREPARE THE WALL SURFACE

Check the absorbency levels by pre wetting the wall

### PREPARE THE MIXTURE

Gradually add plaster into water in a clean bucket, keeping water plaster ratio 65%. Stir to dissolve the plaster until it becomes a homogenous creamy mixture. Allow the mixture to settle for 1-3 minute



### APPLY PLASTER

Apply the mixture on the wall using recommended machinery

\*(Do not add water to plaster)

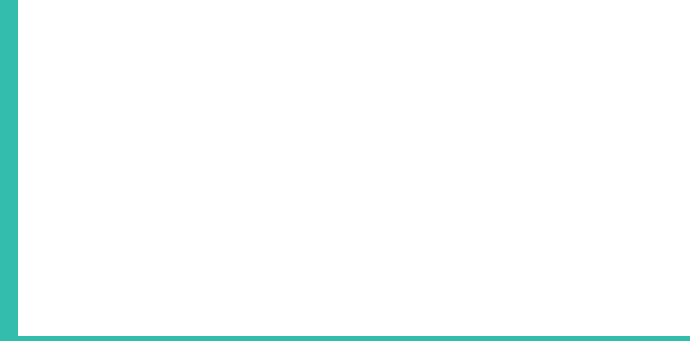
Gypelite plasters can be stored in dry environment for 6 months.

For more information and technical details please log on to [www.gypelite.com](http://www.gypelite.com).

Queries can be forwarded to [support@gypelite.com](mailto:support@gypelite.com).

### PRECAUTIONS





#### **CORPORATE OFFICE**

F-27, 2nd floor, 2nd avenue, Annanagar,  
Chennai - 600 102, TamilNadu

[info@gypelite.com](mailto:info@gypelite.com)  
[www.gypelite.com](http://www.gypelite.com)

#### **FACTORY**

Sarvepalli Bit-2, Venkatachalam Mandal  
Nellore-524321, Andhra Pradesh

[support@gypelite.com](mailto:support@gypelite.com)

**HELP LINE : 1800-572-9981**